

# SHERLOCK

## ***Assembly Instructions***

---

MANBBGC75 REV B 20/9/17

**SHERLOCK GARDEN CART  
BBGC75**



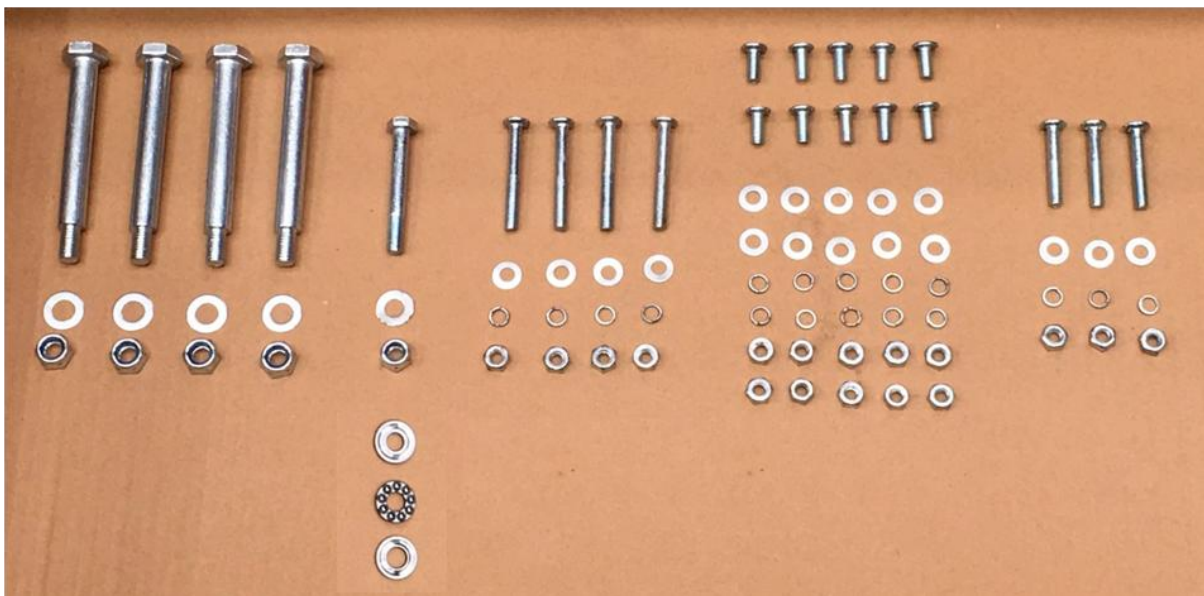
**SILVAN AUSTRALIA PTY. LTD.**

ABN 48 099 851 144

[www.sherlocklastslonger.com.au](http://www.sherlocklastslonger.com.au)

FOR SERVICE SUPPORT PH 1300 745826  
[info@silvanaust.com](mailto:info@silvanaust.com)

# Parts Supplied



4 WHEEL AXLE BOLTS	1 PIVOT BOLT AND BEARING ASSY	4 FRAME BOLTS	10 TRAY BOLTS	2 TIPPING TRAY PIVOT BOLTS AND 1 TOW HANDLE FIXING BOLT
--------------------	-------------------------------	---------------	---------------	---

# Assembly

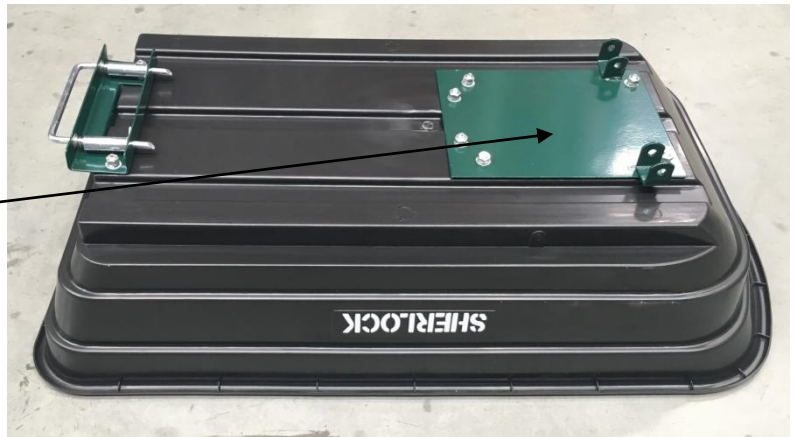
---

## IMPORTANT SAFETY INSTRUCTIONS

- When inflating tyres we recommend using a bicycle or foot pump to prevent over inflation.
- The maximum pressure is 30psi.
- Never use air compressors as the risk of over inflation and bursting is high.
- Do not allow children to use the cart without supervision, it is not a toy.

### Step1.

Fit the handle and tray plate using the 10 Tray Bolts



### Step2.

Fit the chassis to the tray plate using 2 tipping tray pivot bolts. Then fit axle carrier with 2 holes to the chassis using 2 frame bolts.



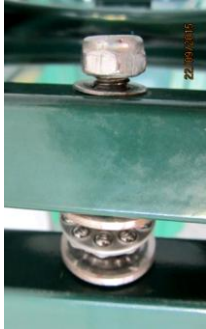


# Assembly

## Step3.

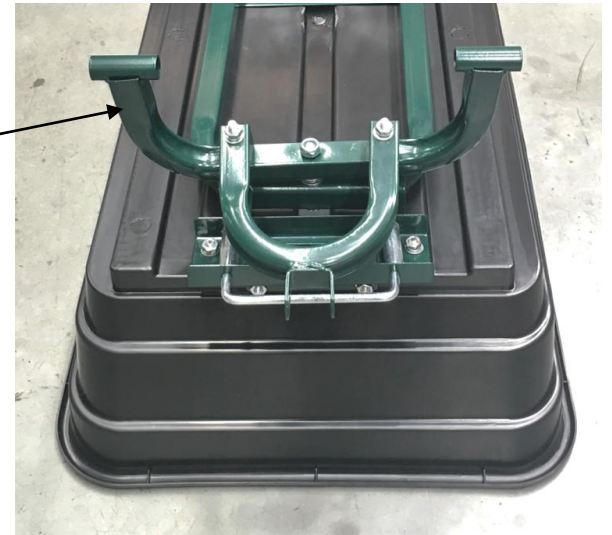
Fit the pivot bearing between chassis and axle carrier with 3 holes.

The grooves of the 2 washers face inwards to cup the bearing



## Step4.

Fit the axle "U" shaped tow bar to the bottom of the axle carrier with 3 holes using 2 frame bolts.



## Step5.

Fit the tow handle and all wheels.

